


Randåsen

2

Roundtrip distance approx. 5,2 and 2,6 km

▶ Gateway with colour code as used on trails

P Parking


 Tourist Information

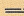
 Viewpoint


 Historical site

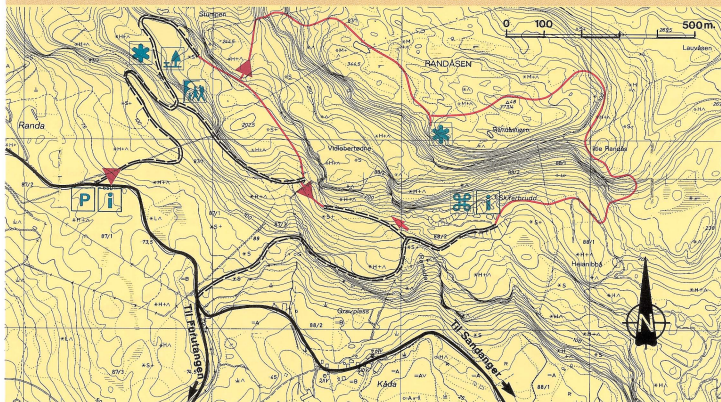
 Picnic area

 Forest trail

 Trail

 Forest track

 Vehicle route



◆ Would you like to know more about various types of tree such as yew, oak, birch and rowan? What do you know about the forest and modern forestry? A tour around the wood trials of Randåsen can provide you with much information. Thirty two information plaques are in place making this an interesting walk.

◆ If you are willing to work a bit harder the tour over Randåsen is an experience. Randåsen lies on a layer of rich slate deposits which provide good growing conditions for species such as the blue anemone and holly. Much slate has been extracted from the deposits and Randøys slate is a well known product.

◆ The blue anemone is found mostly in the chalky ground in the east of Norway and in Trøndelag but we also find it in some places in the southwest as at Randåsen. The anemone has been sadly diminished due to picking, it should therefore be left in peace for others to enjoy.

◆ The stone table at the picnic area along the forest trial is something special and the view from this point and from the top of Randåsen is a sight to see. From here you can see the Ullandhaug tower in Slangerup.



Slate has been quarried from the deposits of Randøys for many decades. Photo: Leiv Krumsvik.



Primulas. Photo: Ole J. Vorraa.
Blue Anemone. Photo: Leiv Krumsvik.
Black Grouse. Photo: Ole J. Vorraa.

◆ You can choose just to take the forest trial or if you wish to go to Randåsen there is marked trail off the trial. For the shortest route to Randåsen you should go past the picnic area.

◆ The roundtrip times are approx one hour for the forest trial and two hours around Randåsen.